

Totus User Manual

Fortiumtech

17/11/2015

Abstract

This instruction manual will assist in the installation of Secure Stick Client utility and the conversion of any USB flash drive into a Secure Stick USB drive. A Secure Stick USB drive serves as a license and will keep expiry, burns/conversions counts and enabled features within the source protection software "Totus". **A blank USB flash drive is required to start initialisation of a new Secure Stick dongle.** The manual also includes instructions on how to install and run a Totus job for Replication and Duplication. **NOTE - Version 27.2 of Totus is compatible with CSS. Versions 23.0 to 26.9 are not compatible.**

Contents

I	Introduction	2
II	Getting Started	2
1	Step 1: Secure Stick	2
1.1	Installation	2
1.2	Creating a new Secure Stick dongle	3
2	Step 2: Totus	6
2.1	Totus Setup	6
2.2	Using Totus	7
2.2.1	Source Requirements	8
2.2.2	Duplication	10
2.2.3	Replication	11
3	Unsupported Players	11

Part I

Introduction

There are 2 software components involved in using this Totus Software. You will need to install the components listed below. Please read this User Manual to install and run the software.

1. Secure Stick – security dongle software to use the Totus application. Contains the expiry, conversion usage, and enabled features within the Totus application.
2. Totus Software – to apply the Patronus copy protection software into ISOs, and DDPs for duplication and replication.

Part II

Getting Started

1 Step 1: Secure Stick

You should have already received software download links from Fortiumtech support. If you encounter any issues accessing the links or have not been provided with download links, then please contact us on info@fortiumtech.com.

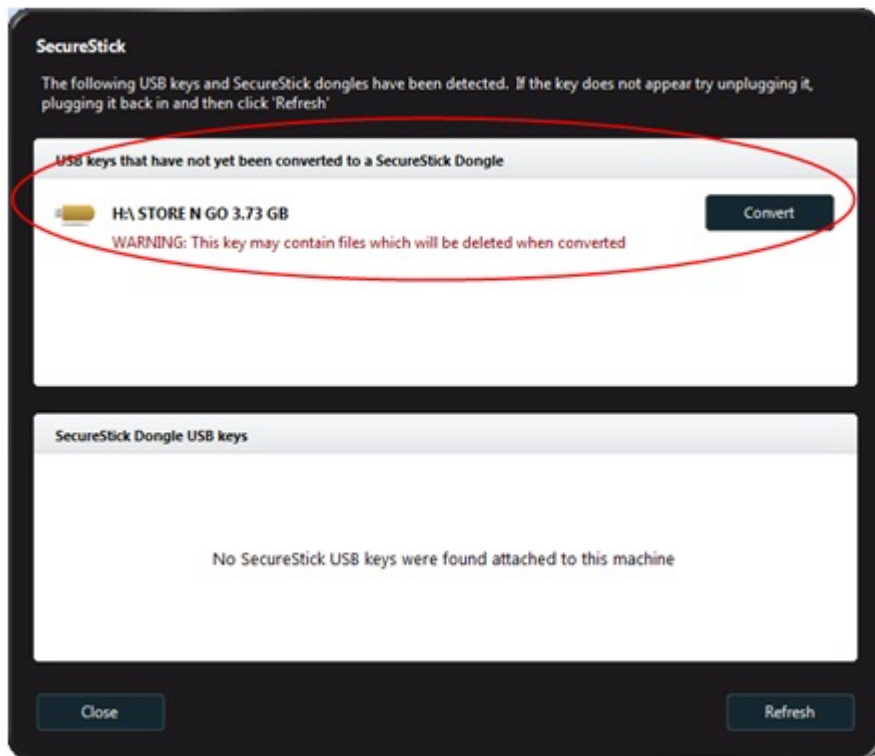
1.1 Installation



1. Click on the first link, *provided by Fortiumtech*, and download the Secure Stick Client Utility software. You may be prompted to save or open the file via your web browser.
2. If you have decided to save the file, then locate it to where it was saved and launch it by double clicking on the file itself. This should open up the installation wizard. Click **Next** to continue.
3. Choose where you would like to install the software. It is fine to leave this as default. Click **Next** to continue.
4. Select any additional tasks you would like to have and click **Next** to continue.
5. Click **Install** as setup is now ready to begin installing Secure Stick Client Utility on your computer. A progress bar should be visible to trace the progress of the installation operation.
6. Click **Finish** to complete and exit the setup.

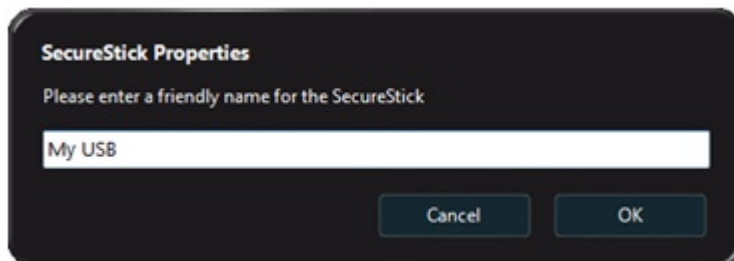
1.2 Creating a new Secure Stick dongle

1. Insert a Blank USB flash drive into your computer. This will be the dongle you wish to convert to a Secure Stick dongle. **Please make sure the dongle is blank, if not, then back the data up before proceeding. Fortium Technologies are not responsible for any data loss. The dongle initialisation time varies depending on the size of the dongle. It is advisable not to use high capacity USB dongles.**
2. Launch Secure Stick **Client Utility**. (*Usually located at **Start** → **All Programs** → **Fortium** → **Secure Stick** → **Client Utility**)*)



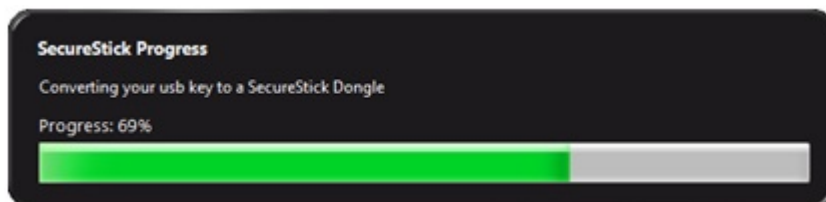
3.

Any dongles appearing under the "USB keys that have not yet been converted to a SecureStick Dongle" signifies dongles that have not been initialised as Secure Stick dongles. Find the dongle you wish to convert to Secure Stick and press the **Convert** button next to its' corresponding dongle name.



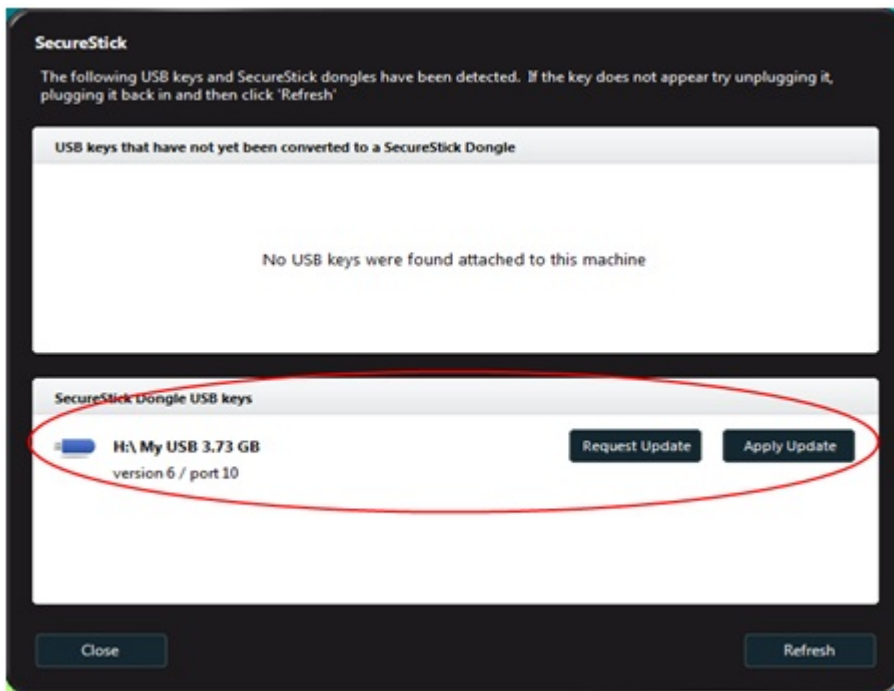
4.

Enter a friendly name for the Secure Stick and click **OK**.

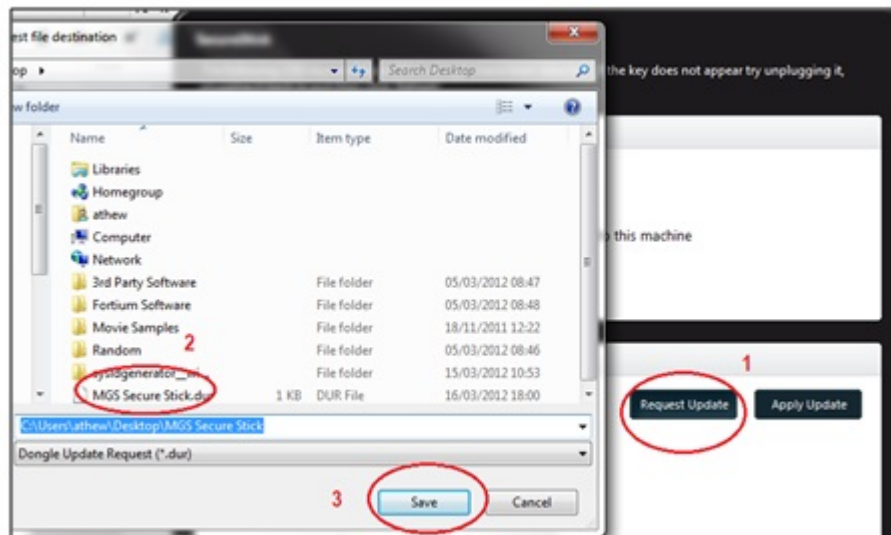


5.

You can track the ongoing dongle conversion progress as shown. It may take a while for the progress to complete.

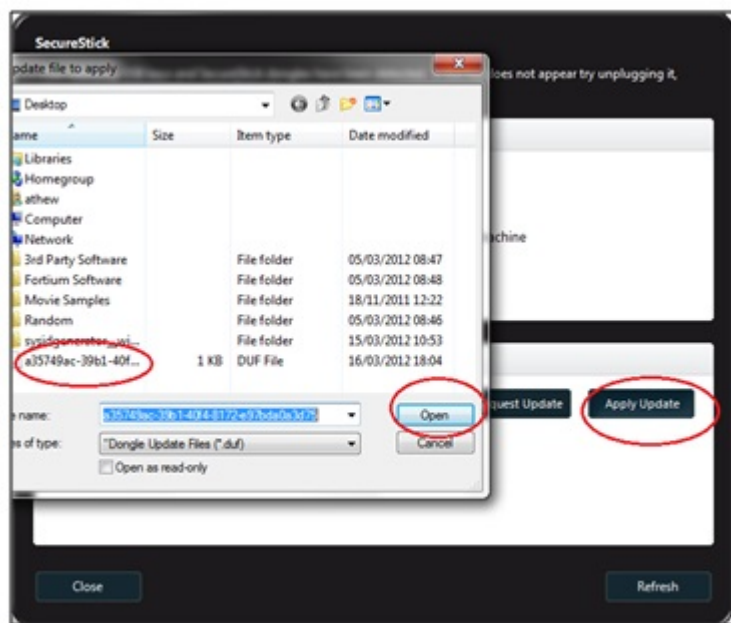


6. Once a USB dongle has been successfully converted, it should be visible under the "SecureStick Dongle USB keys" section in Client Utility. Click on the **Request Update** button, next to your dongle name.



7. Select where you want to save the request file and then give it a name, adding a ".dur" extension at the end of the name. Click **Save** to save the file.
8. Create an email and attach the **dur** file (request file), that was saved on the previous step, and send the email to **info@fortiumtech.com**.

- Fortium will then email you back with an update file (**duf** file). *During UK office hours this should be a prompt turnaround, however in out of office hours it may not be until the following day, except for weekends.*



- To apply the update file (duf file), save the file you received to your computer, *e.g desktop*. Then within Client Utility click on the **Apply Update**.
- Select where the update file is located by left clicking on the file, then click on **Open** to apply the update. If successful, a message will appear informing you the update was successful. *If for any reason the update is not successful, please contact support@fortiumtech.com, and include the issue/symptoms. One of our Technical Support members will get in touch asap.*

2 Step 2: Totus

This section includes basic information on setting up Totus, Patronus Copy Protection GUI for Replication and Duplication, and illustrate the basics needed to protect ISO and DDP set files.

2.1 Totus Setup

On this step, you will need to use the second download link, provided on your email, containing Totus Setup file.

- Click on the second link, provided by Fortium, to download **Totus**. You could either Run or Save the program. *If yo do choose to save the program, please make sure to remember where you have saved it.*

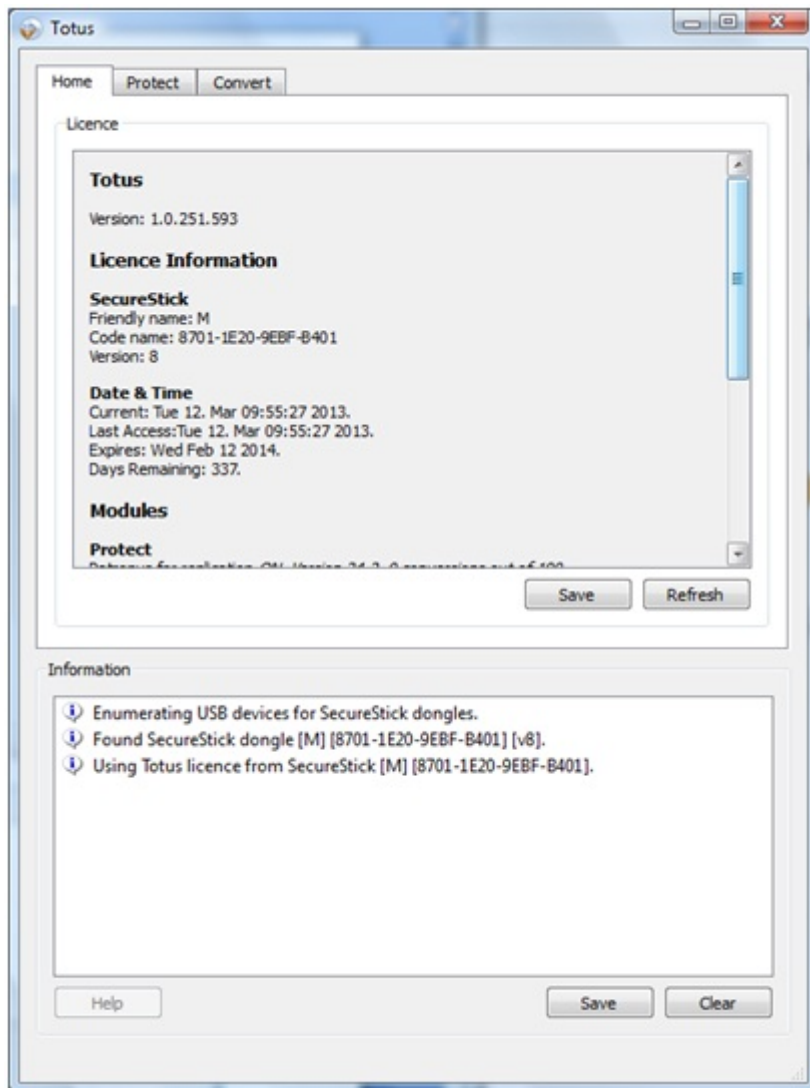


2. The installer should launch. If you have chosen to save the launcher, then please locate it and launch it manually by double clicking on it.
3. The setup wizard will install Totus on your computer. Follow the instructions that setup wizard shows in the box to install the Totus software. Once done, click **Finish** on the wizard to finalise the installation.

2.2 Using Totus

Totus has been designed to be simple for any type of users to get started. After launching the program, please familiarise yourself with the interface. The interface will include information about the number of conversions available, expiry and modules.

1. Launch Totus. (*Totus is usually located at **Start** → **All Programs** → **Totus** → **Totus***)



2. A lot of the information shown on the **Home** tab are actually useful. Information such as *Version*, *Expiry*, *Conversion count*, *Modules/Features enabled* and the *Secure Stick ID*.
3. To start protecting an ISO/DDP click on the **Protect** tab.

2.2.1 Source Requirements

It is important that the following requirements are met before introducing Patronus copy protection to a replication or duplication image.

Replication (DDP)

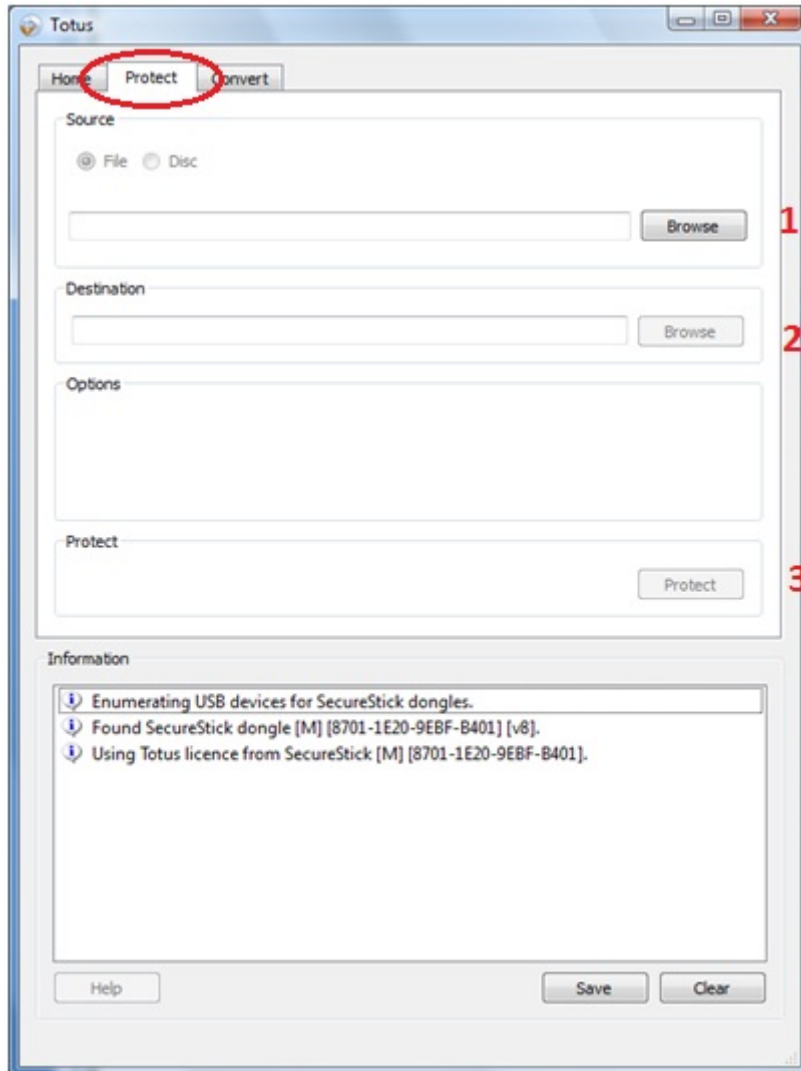
- Format must be a DDP unprotected directory
- Each layer needs to have at least 70MB free space prior to protection

- Each layer must not contain more than 2291152 sectors overall (with protection)
- DDP must not have CSS flags enabled or contains any other protection (unless advised) **CSS IS ONLY COMPATIBLE WITH CERTAIN VERSIONS OF TOTUS, LIKE 27.2. IT IS NOT SUPPORTED IN CONJUNCTION WITH CSS IN ANY PATRONUS VERSION FROM 23.0 TO 26.9. FOR ADVICE CONTACT FORTIUM. info@fortiumtech.com.**
- Source Storage Mode must be either 0,1,6 and NOT 7
- Layers must not be material scrambled, Source Materials Scrambled must be 0

Duplication (ISO)

- Format must be an unprotected ISO (Not a renamed image extension, e.g .IMG)
- ISO must be a valid DVD video structured image (contains a valid VIDEO TS)
- An image will need at least 70MB (For each layer) of free space available
- VIDEO TS folder must not contain any files other than the Vobs, Bups and IFO files
- ISO must not contain any other protection
- VIDEO TS directory must only contain VOBS, BUPs and IFOs. Any other files e.g LAYOUT or Thumbs files should be removed.

2.2.2 Duplication



1. **Browse** for the source location. *(The source ISO file to be protected)*
2. **Browse** for a destination location. *(The target output location where the final protected ISO will be produced. The destination **CAN NOT** be a DVD drive, it has to be stored on hard drive or removable storage devices)*
3. A custom layer break can be set. However leave this empty for Totus to automatically determines the best point to split the disc. This option is only applicable on DL (Dual Layer) images.
4. Click on the **Protect** button to start the protection process.
5. Wait for the process to finish, tracking, click **OK** on the "Completed successfully." and then click on **Finish**. *You can save the protection log if needed.*

2.2.3 Replication

1. On the *Source* section of the program, click on the **Browse** button and select the DDPID file within the DDP folder you wish to protect. If multiple folders, *i.e dual layered DDP exists*, then always browse to the first corresponding layer, *usually layer0*, and select the DDPID file within it. *(If dual layer DDP, it is important to ensure the root directory containing both layers. Totus will only look for the coupled layer in the same root directory. e.g "My Movie" directory must contain both layer0 and layer1)*
2. **Browse** for the output location. *(Where the protected DDP files will be produced. Make sure that the containing directory is empty, this is because the output will produce layer0 and layer1 on the chosen directory)*
3. Optionally you could specify whether CSS scrambling are contained within your DDP. Leave this at **Auto** for the best result.
4. Click on the **Protect** button to start the protection process.
5. Wait for the process to finish, tracking, click **OK** on the "Completed successfully." and then click on **Finish**. *You can save the protection log if needed.*

3 Unsupported Players

Here is a list of all unsupported players:

XBOX (Original)

Released on 2001, and was discontinued on 2008.

VLC Media Player

VLC media player is denied playback due to ripping and streaming capability.

Sony PlayStation 2

Released on 2000, and was discontinued on 2013. *The PS2 FAT has known playback issues with discs carrying more complex data, such as complex navigation and copy protection. It is a known fact that the PS2 FAT, which has been discontinued, is not expected to support Patronus. The PS2 SLIM is confirmed as having correct playback. However, some of the older models, that are no longer supported may have the same issue as the PS2 FAT, in particular, they may show intermittent playback. This means that any PS2 SCPH7XXXX and above, may have correct playability.*

Arcsoft 5 Media Centre

Player is incompatible with some recordable media.

For more info, please contact info@fortiumtech.com or call us on + 44 (0) 845 862 5544 or if in the US +1 310 409 4160